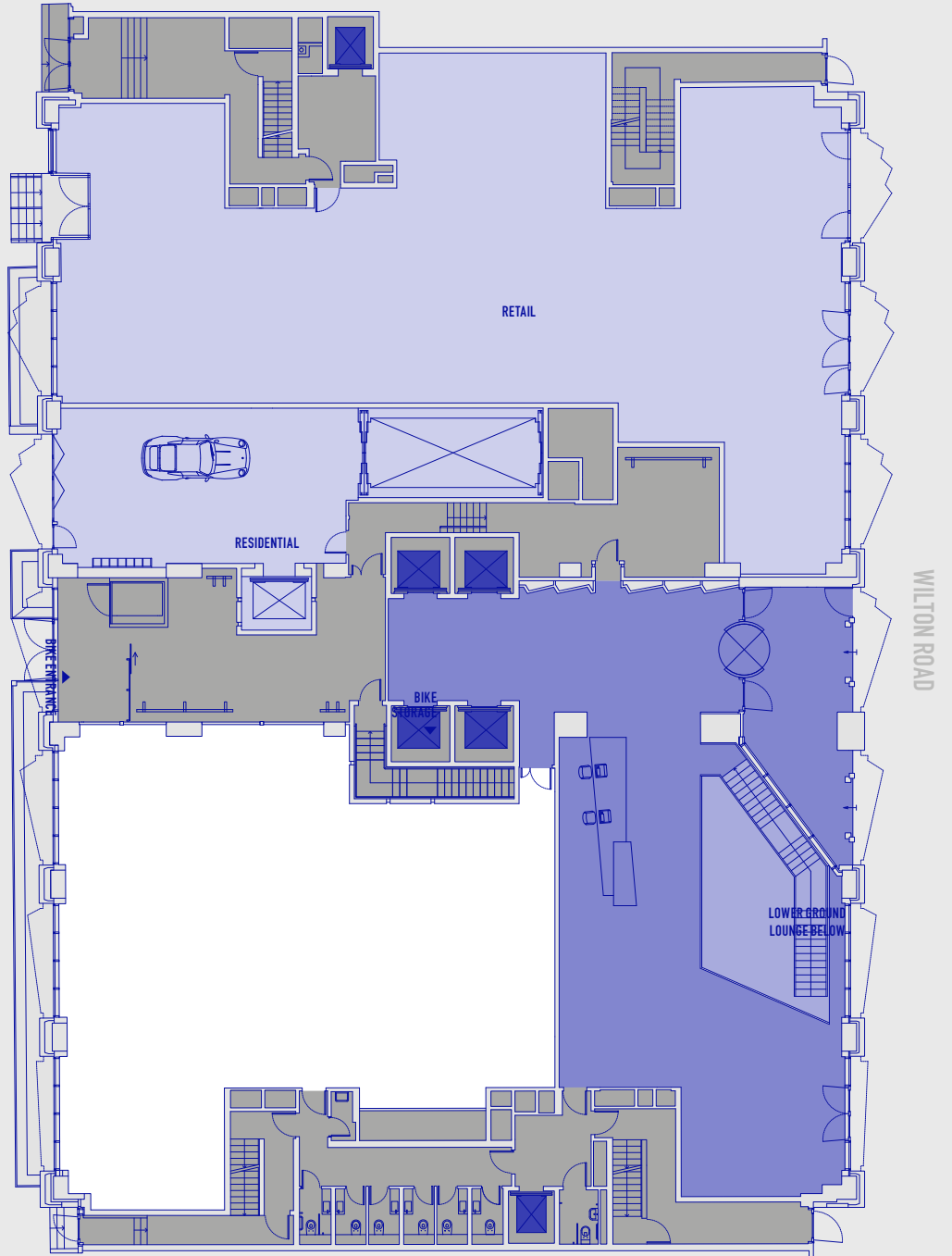


Floor Plans

GROUND FLOOR - 3,057 SQ FT (284.0 SQ M)

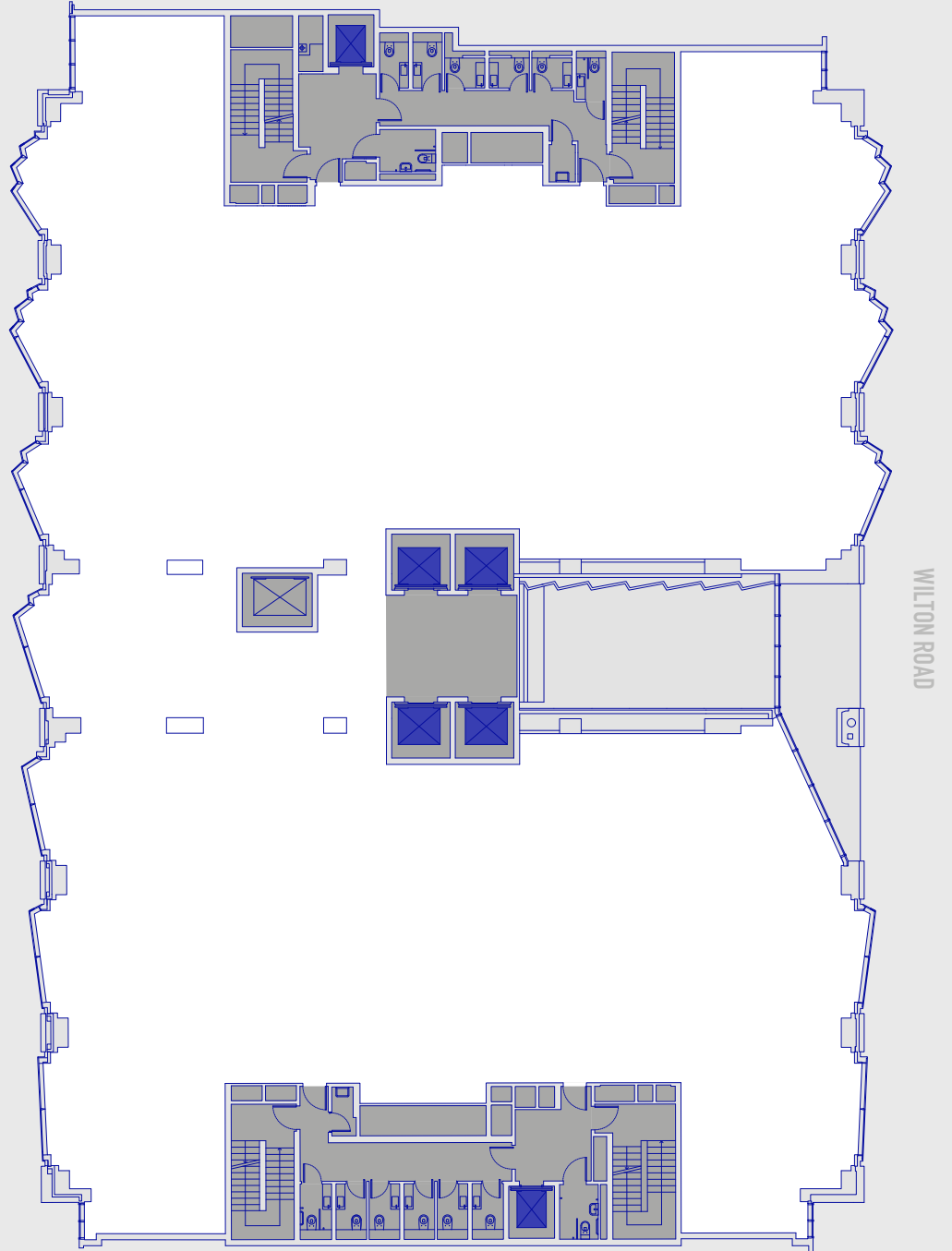


OFFICES RECEPTION RETAIL & RESIDENTIAL LIFT CORE

FLOOR PLAN NOT TO SCALE. FOR IDENTIFICATION PURPOSES ONLY.

1st floor Plans

FIRST FLOOR - 12,244 SQ FT (1,137.5 SQ M)

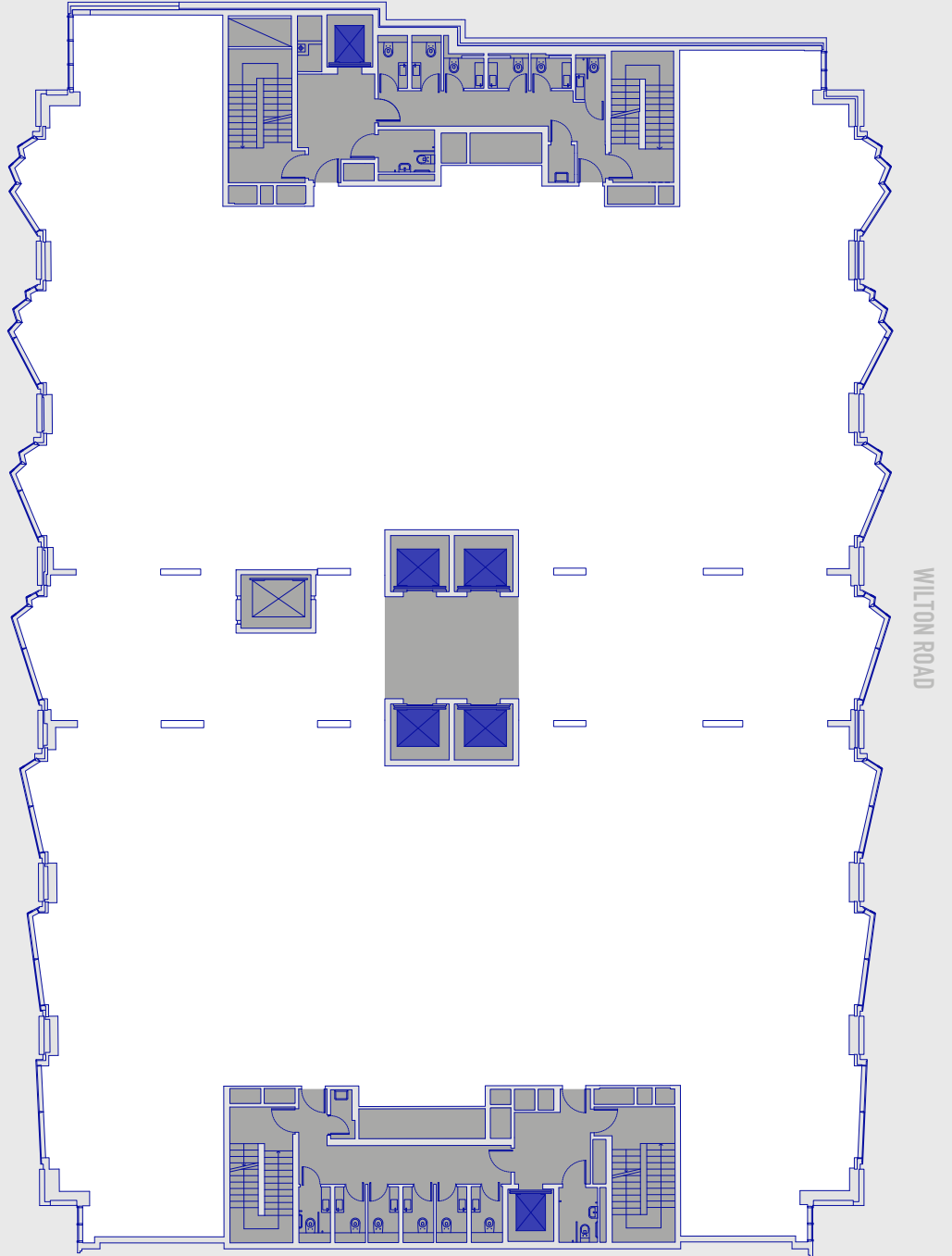


OFFICES LIFT CORE

FLOOR PLAN NOT TO SCALE. FOR IDENTIFICATION PURPOSES ONLY.

Floor Plans

SECOND TO FIFTH FLOOR - 13,344 SQ FT (1,239.7 SQ M)

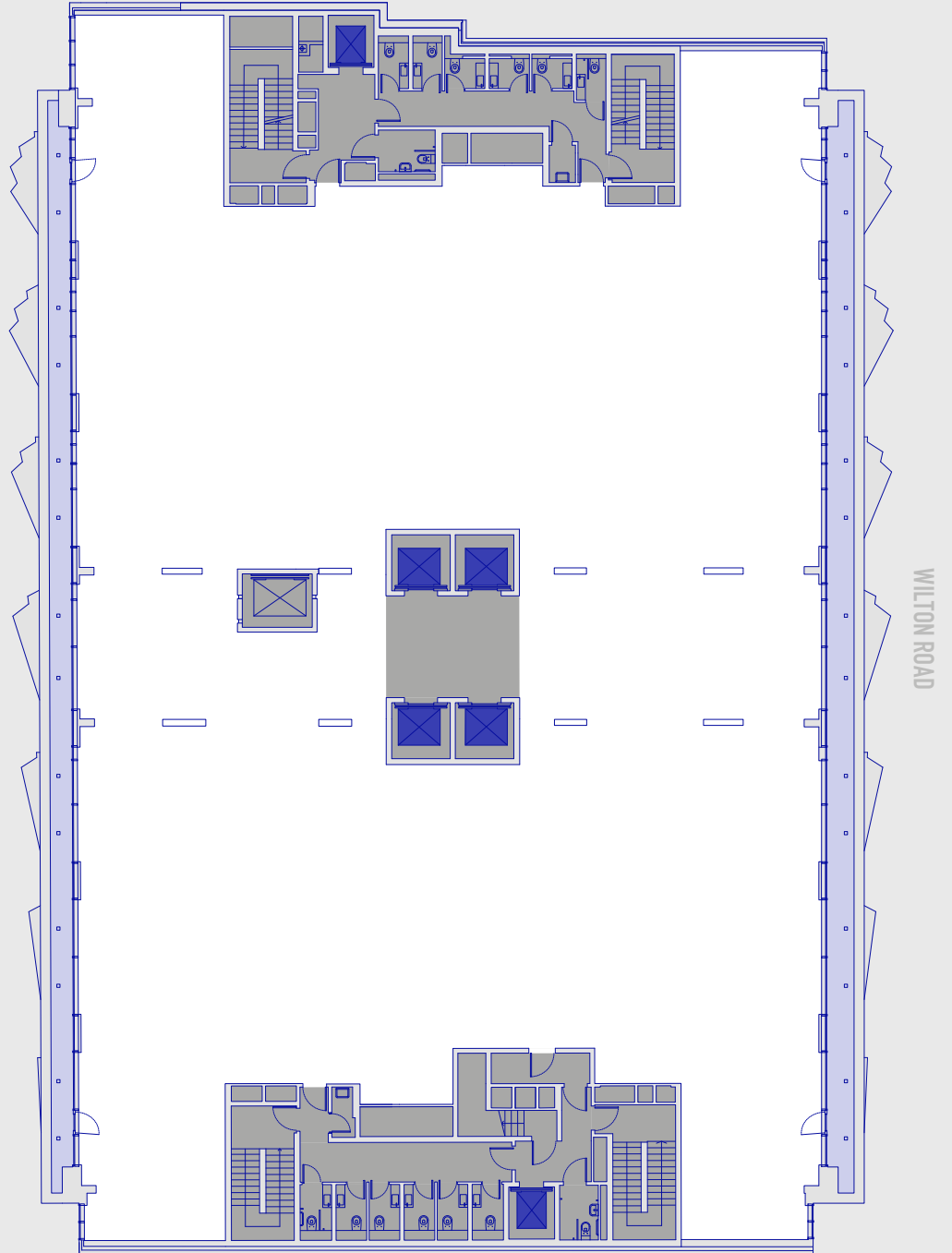


OFFICES LIFT CORE

FLOOR PLAN NOT TO SCALE. FOR IDENTIFICATION PURPOSES ONLY.

Floor Plans

SIXTH FLOOR - 11,769 SQ FT (1,093.4 SQ M)



OFFICES LIFT CORE TERRACE

FLOOR PLAN NOT TO SCALE. FOR IDENTIFICATION PURPOSES ONLY.